

How to create an L&D strategy that makes an impact

A Scout Talent Group webinar





Holly Itzstein

**Learning Services Specialist
Scout Talent Group**

P: 07 3330 2582

E: holly.itzstein@scouttalent.com.au



Faye Kennedy

**Head of Client Experience
Scout Talent Group**

P: 07 3330 2555

E: faye.kennedy@scouttalent.com.au

Housekeeping

- Your microphones are on mute so we can't hear you, however we'd love your participation
- We'll launch some Audience Polls throughout the session
- If you have any questions or comments, please type them into the Zoom chat function on your screen
- The webinar recording and slides will be emailed afterwards

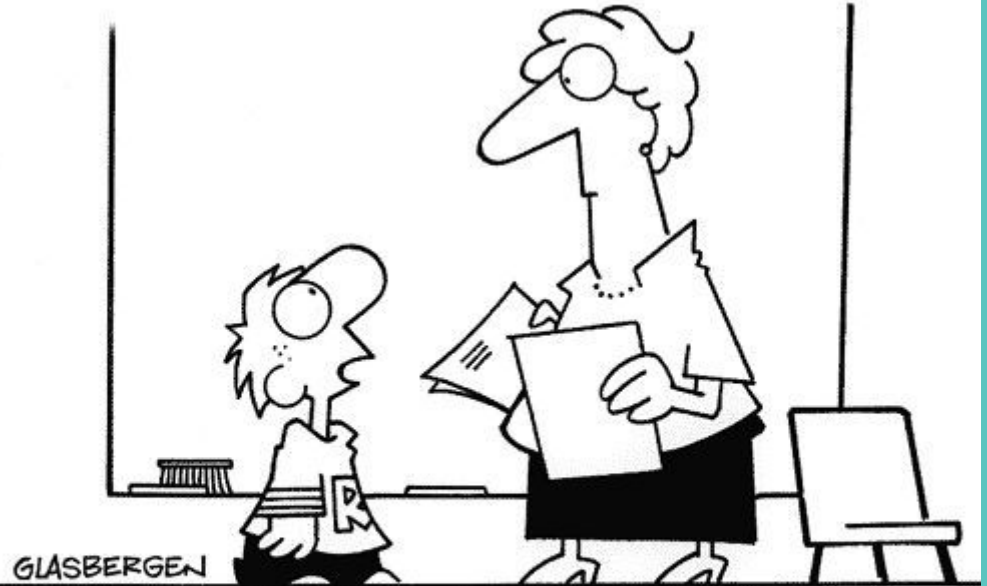
Today's Topics

- How to collate the best possible training materials
- Options for creating great training from all of that material
- How to know you're going to effectively deliver your training
- Tips for LMS shopping

POLL

The eLearning market anticipated to triple over the next 5 years

Copyright 1997 Randy Glasbergen. www.glasbergen.com



“I couldn’t do my homework because my computer has a virus and so do all my pencils and pens.”

**How do we make sure we're
winning the e-learning
game?**



**Endless
opportunity
to grow with
online learning**

Connect your employees + Have fun



**SCOUT
TALENT**
SEE PEOPLE FIRST

Off the shelf, aggregated content is
easily accessible today



Contextualisation:

communicate the unique culture, values, and way of doing things in your organisation.

SCOUT TALENT

SEE PEOPLE FIRST

Consolidated Assets

*Gather and tidy your key
learning items*



SCOUT TALENT

SEE PEOPLE FIRST

Situational Learning

*Use your stories to build
relevant learning theories*



SCOUT TALENT

SEE PEOPLE FIRST

Subject Matter Experts

*Tap into the knowledge of
your internal champions*




Lean on services from your L&D provider to help you get the most out of your system

Top Tips:

- **Get expert implementation support so you don't "purchase and park" your L&D system**
- **Create learning experiences that support your team**
- **Use a mix of off-the-shelf and contextualised training content**



The background of the slide features a sunset sky with a large, glowing sphere of interconnected nodes and lines, resembling a network or data structure. A hand is shown holding the sphere from below, with the sun's light creating a lens flare effect. The overall aesthetic is modern and technological.

Consider outsourcing if you don't have an L&D specialist on your team

Top Tips:

- **Qualified instructional designers know how to break learning down to deliver a palatable learning experience**
- **Don't stress about it being perfect**

**How do you bring the
learning to life, online?**

SCOUT TALENT

SEE PEOPLE FIRST

Simple Reporting

*Choose data points that
make sense to everyone
that you can share
anywhere*

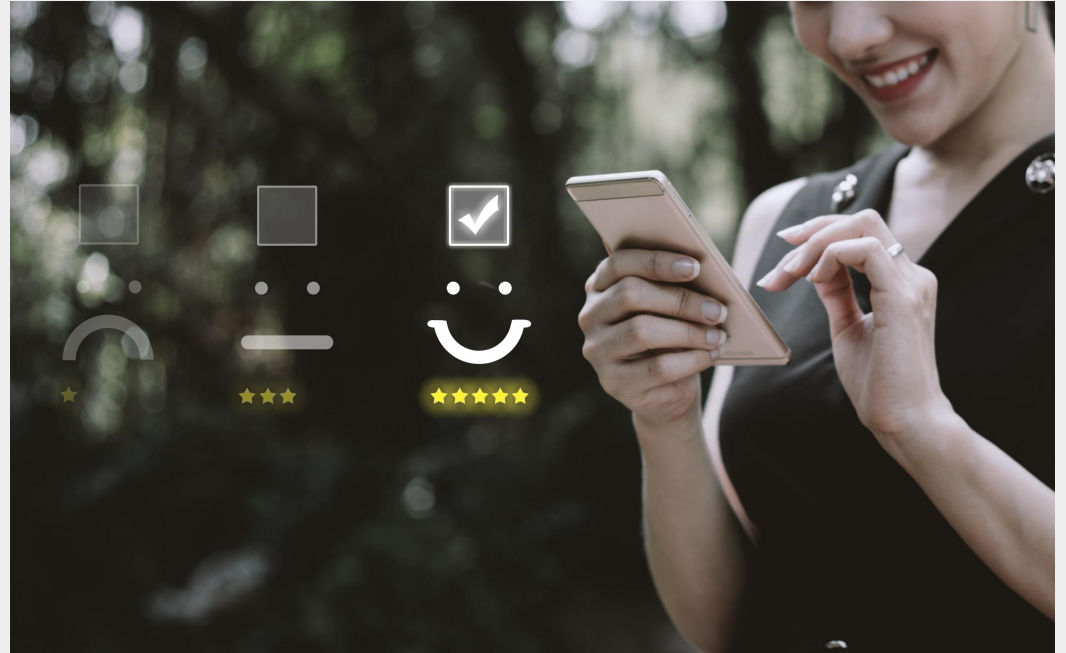


SCOUT TALENT

SEE PEOPLE FIRST

**A system people
enjoy using**

*A user friendly system is a
must if you want learners
to own their learning
outcomes*



SCOUT TALENT

SEE PEOPLE FIRST



Choose a 'specialist'
system for a first-class
outcome



POLL

Questions

Recap

- Getting materials together is half the battle - you have more than you think!
- Both off the shelf training and bespoke training has its benefits
- Make sure you shop around - one size does not fit all!



Holly Itzstein

**Learning Services Specialist
Scout Talent Group**

P: 07 3330 2582

E: holly.itzstein@scouttalent.com.au



Faye Kennedy

**Head of Client Experience
Scout Talent Group**

P: 07 3330 2555

E: faye.kennedy@scouttalent.com.au